



COMPANY PROFILE

Landscaping for Professionals

Est: 1988



Actual Landscaping Inc.
PO Box 21030 RPO
Maple Ridge BC, V2X 1P7
Phone: 604 462 0237



Don DeMarco, President
604 968 3473
don@actuallandscaping.com



Ryan Charters, General Manager
778 240 7679
ryan@actuallandscaping.com



Michelle Chaffee, Estimator
604 462 0237 x 101
michelle@actuallandscaping.com



Katey Holt, Finance & Operations
604 786 5289
katey@actuallandscaping.com



Jon Gazendam, Construction Manager
778 319 3214
jon@actuallandscaping.com



LANDSCAPING FOR PROFESSIONALS – EST. 1988

OUR COMPANY

Actual Landscaping has expanded over the past 35 years and is well established as a large scale commercial landscape company.

We provide quality commercial and residential landscape construction, civil installations, maintenance programs and environmental restoration projects around the Lower Mainland and Fraser Valley.

We provide a wide range of landscaping construction services with the expertise and depth of experience to take on versatile projects with confidence.

OUR TEAM

Actual Landscaping owns a large fleet of modern vehicles and equipment. We continually invest in current technology and products to meet evolving industry needs, and ensure quality materials are used effectively and sustainably. With a large and diversely skilled team, supported by veteran management, our projects are executed with a high level of integrity.

COMMERCIAL LANDSCAPE CONSTRUCTION

SERVICES INCLUDE:

TURF

IRRIGATION

RIPARIAN RESTORATION

GREEN ROOF

PLANTING

INVASIVE SPECIES REMOVAL

FENCING

WATER FEATURES & RAIN GARDENS

SITE FURNISHINGS

RETAINING WALLS

CONCRETE WORKS

PLAYGROUNDS

PAVING STONES

CUSTOM WOODWORKING

ENVIRONMENTAL WORKS

PERMEABLE PAVERS

CIVIL LANDSCAPING

MAINTENANCE PACKAGES





CUSTOMERS WE CONTINUE TO WORK WITH

Beedie Construction

Streetside Developments

Cantera Management Group

Bosa Development

Qualico Developments

Aragon Development

Onni Group

Steelcrest Construction

Wales McLelland Construction

Ledcor

Adera Development

Otivo Group

Metrocan Construction

Wesgroup

Van Mar Constructors

Ventana

Rize

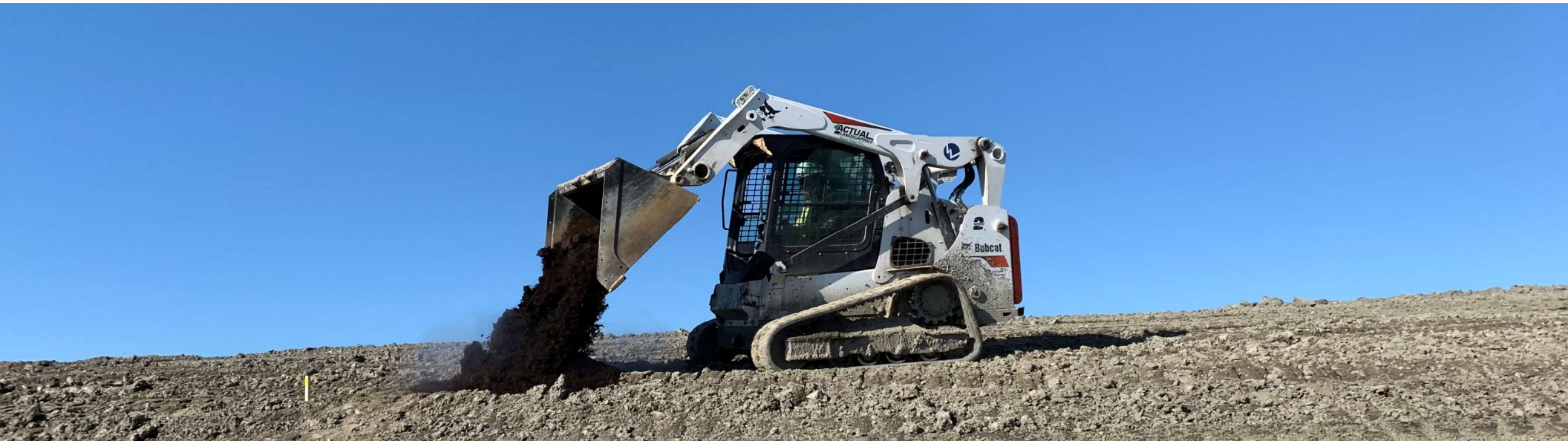
Clark Builders

Cressey

Essence

Bosa Construction

MEMBERSHIPS & CERTIFICATIONS



ICPI – INTERLOCKING CONCRETE PAVER INSTITUTE

ALLAN BLOCK INSTALLATION

AQUA PAVE INSTALLATION

OFA

FALL PROTECTION CERTIFIED

IVES CERTIFIED

LIVE ROOF

XEROFLOR

BCLNA MEMBER & VRCA MEMBER

IIABC MEMBER



OUR MISSION AND VALUE

Who We Are:

Our company is comprised of team members working toward the same high standards with honesty, responsibility, integrity, strong work ethics and positive attitudes.

What We Do:

We provide the highest quality landscape and hardscape projects with exceptional customer service.

How We Do It:

We provide the highest quality by approaching each job with expectations that exceed those of our customers.



2023 PROJECT REFERENCE LIST

Onni Group

- Nature's Walk Phase 9 & 10
- Riva 4

Bosa Developments

- Granville

Cressey

- Format

Steelcrest Construction

- Willoughby Townhomes

Beedie Construction

- Panorama Ridge
- Port Kells West
- Gray Creek
- Amazon YVR6

Adera Development

- Britannia

Cantera

- The Robinsons

Rize

- 19th & Fraser



2022 PROJECT REFERENCE LIST

Onni Group

- Nature's Walk Phase 3
- Suterbrook
- TFN

Bosa Developments

- Granville

Bosa Construction

- Harbourside

Steelcrest Construction

- Oak
- Parque
- Multani Residential
- Prescott Residential

Clark Builders

- ERA Maple Ridge

Beedie Construction

- Panorama Ridge
- CDS
- Port Kells West

Capo Construction

- Lordco

Ventana Construction Corp.

- Langley Gateway

Adera Development

- Duet II
- Crest
- Trio

Cantera

- The Robinsons



2021 PROJECT REFERENCE LIST

Onni Group

- Nature's Walk Phase 3
- Suterbrook
- TFN

Bosa Developments

- Granville

Steelcrest Construction

- Oak

Clark Builders

- ERA Maple Ridge

Beedie Construction

- Saputo

Capo Construction

- Lordco

Norson Construction

- VFS

Orrmoniz

- Monument

Vanmar Constructors Inc.

- St. Andrews

Ventana Construction Corp.

- Poco Rec Centre

Adera Development

- Duet



2020 PROJECT REFERENCE LIST

Onni Group

- Nature's Walk Phase 2

Bosa Developments

- Lynn Valley Phase 2
- Lynn Valley Phase 3

Steelcrest Construction

- Twins Townhouses

Beedie Construction

- Thirty8
- Westpointe
- 27th
- Gloucester North Strata
- Coanda

VanMar Constructors

- New Vista

Norson

- Mission Junction
- Maple Ridge Mall

Metrocan Construction

- The Grey

Adera Development

- Crest

2019 PROJECT REFERENCE LIST

Onni Group

- Nature's Walk Phase 1
- TFN – ESA
- Allwood Phase 5&6

BOSA Developments

- Lynn Valley Phase 2

Steelcrest Construction

- Kanaka Hill

Aragon Development

- Shift
- Port Royal 6C

Cantera Management

- Crimson
- Northview

Beedie Construction

- Magnum
- Mayne Coatings
- Dorigo
- Fedex Centre
- Project Eliot
- Rimex Facility
- 275th Centre



2018 PROJECT REFERENCE LIST

Onni Group

- Allwood Phase 2,3 & 4

BOSA Developments

- Lynn Valley Phase 1

The Concots Group

- The Terraces
- The Terraces Phase 2
- Myron's Muse

Archstone Homes

- Rock Ridge

Adera Development

- Grandview
- Greenway

Wales McLelland Construction

- Willoughby Town Centre

Beedie Construction

- Swiss water
- Crescent 2 Centre
- Delta Building Products
- North Delta Seafoods
- Leon's Furniture





www.actuallandscaping.com